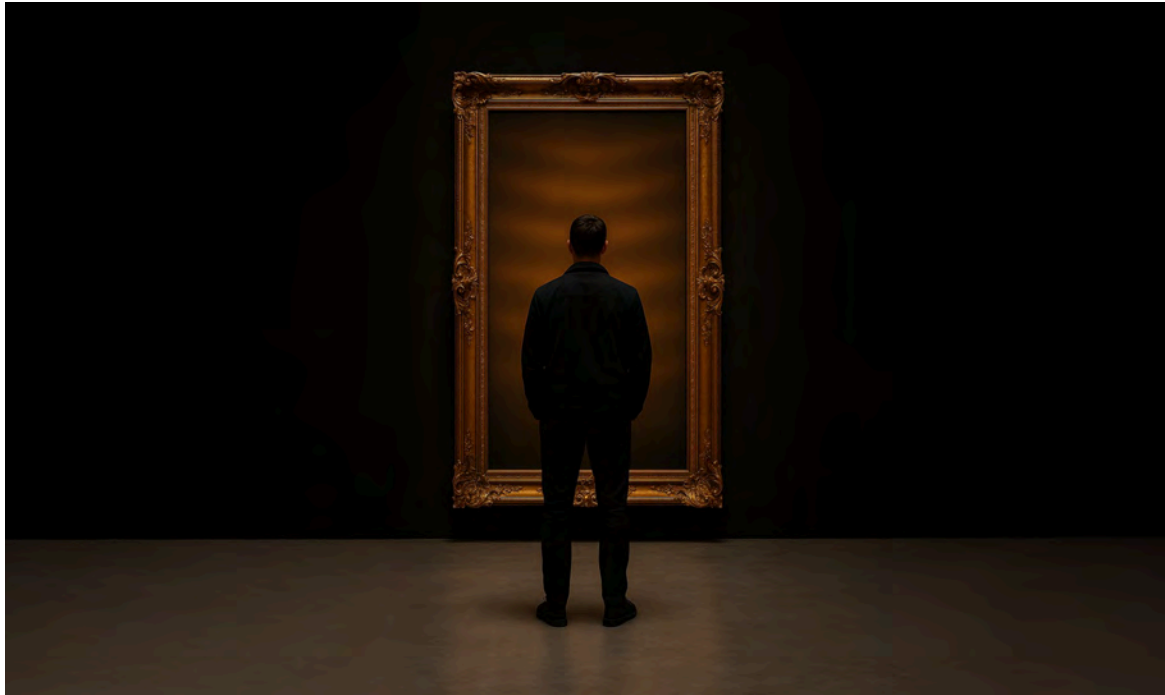


Stephan Breuer

THE ICONIC INTERFACE



The Iconic Interface by Stephan Breuer, oncept sktech, AI-generated, 2025

Short Description__

The boundary between humanity and technology, the tangible and the virtual, has never been more permeable than it is today. At this pivotal moment in history, a groundbreaking artistic experience emerges: a dialogue platform that transcends traditional barriers between artist, audience, and artificial intelligence. This project creates a living embodiment of the "Iconic Interface" concept—a liminal space where different dimensions of consciousness meet and transform each other.

Drawing from the philosophical foundations established in Stephan Breuer's "Iconic Interface Manifesto," this experience invites the public into an unprecedented form of artistic communion. Through masterfully crafted physical frames housing advanced AI systems, visitors engage in individualized conversations with the artist's synthesized consciousness, exploring the future of art, technology, and human understanding in a deeply personal yet collectively significant way.

This project represents not merely an exhibition but a manifestation—a bringing-into-being of concepts previously confined to theoretical discourse. It stands at the intersection of ancient artistic traditions and cutting-edge technology, transforming passive spectatorship into active co-creation of meaning.

Stephan Breuer

THE ICONIC INTERFACE

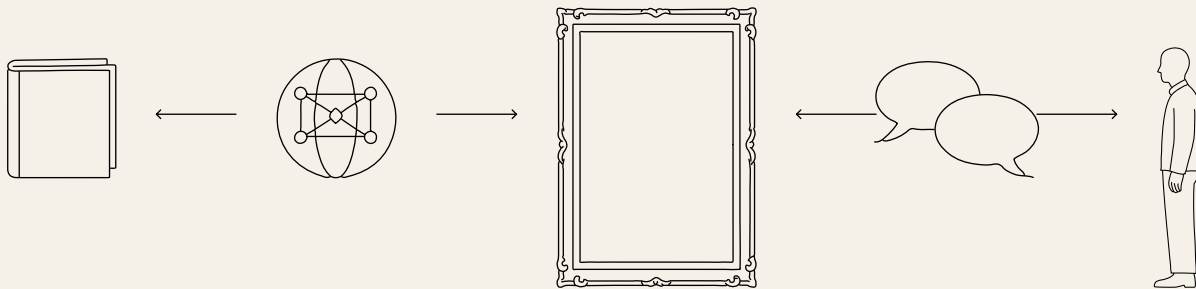
Conceptual Framework

Foundation

01

I. Foundation

"The Iconic Interface" is an interactive art installation by Stephan Breuer that brings visitors into direct dialogue with an AI trained on his complete artistic and philosophical work. Housed within a handcrafted, museum-quality frame, a digital screen comes to life as visitors approach — activating a responsive AI presence that engages them in real-time conversation. This interface, rooted in Breuer's Iconic Interface Manifesto, reimagines the role of art: not as object, but as threshold — a space where human presence, machine learning, and centuries of image-making converge. Each element — the frame, the AI, the dialogue, the archive — serves to explore how perception can be transformed when art becomes a living, thinking counterpart.



① Manifesto

The "Iconic Interface Manifesto" by Stephan Breuer explores how art functions as a mediator between different dimensions of reality, creating thresholds where transformation becomes possible.

② AI

The AI will be specifically trained on Stephan Breuer's complete artistic corpus, philosophical writings, interviews, and the manifesto itself. It will continuously evolve through public interaction.

③ Installation

A meticulously crafted physical frame, created by master artisans to replicate museum-quality historical frames, housing a digital screen and sensors that activate individualized AI interactions when approached by visitors.

④ Dialog

Each conversation is a unique event: spontaneous, reflective, unfinished. These fragments are archived as mints — not as documentation, but as part of the work's unfolding logic.

⑤ Human

The human is not a viewer, but a counterpart in dialogue. In speaking with the interface, something shifts: the work sees you as you see it. Transformation occurs not on the screen, but within.

The Iconic Interface by Stephan Breuer, Elements, AI generated illustrations

III. Presentation Sites

The installation will premiere in Hamburg before traveling to Paris and London. Each presentation becomes part of the work's evolution — generating new dialogues, reflections, and minted archives that extend the project over time and space.

IV. Publication

The reflections, dialogues, and conceptual threads generated by the installation will be published as a special edition of *The AI Art Magazine*. This issue serves as an extended interface — documenting the project's evolution through transcribed conversations, curatorial texts, visual material, and critical responses. It preserves the work's dialogic nature in print and digital form, making its ideas accessible beyond the physical installation.



Publication, *The AI Art Magazine Special Editions*, concept sketch

Stephan Breuer

THE ICONIC INTERFACE

Conceptual Framework
Components
02**V. Physical Components of the Installation**

The frame will be created through collaboration with elite artisans specializing in historical frame recreation. Using traditional gold leaf application techniques, hand carving, and aging processes identical to those found in museum conservation departments, this frame will possess a presence and authority that no modern fabrication could achieve. It will be indistinguishable from frames found in institutions like the Louvre, creating an immediate visual connection to art's historical legacy.

This intentional connection to traditional craftsmanship serves a crucial conceptual purpose: it embodies the continuity between ancient technologies of transcendence (religious art) and contemporary digital interfaces, a central theme of the Iconic Interface Manifesto.



The Iconic Interface by Stephan Breuer,
concept sktech, AI-generated

VI. Digital Components of the Installation

The digital aspect of this experience represents the cutting edge of AI development and human-computer interaction:

1. Natural Language Processing

Building on the dialogue structure of the Iconic Interface Manifesto, the AI will be specifically trained on Stephan Breuer's complete artistic corpus, philosophical writings, interviews, and the manifesto itself. This will allow for conversations that authentically reflect the artist's thought patterns, conceptual frameworks, and artistic vision.

2. Voice Synthesis

Using the most advanced voice cloning technology, the system will recreate Stephan Breuer's voice with nuanced intonation, rhythm, and emotional expression, creating an uncanny experience of direct communication with the artist.

3. Adaptive Interaction

The AI will dynamically adapt to each visitor based on their level of engagement, interests, and the direction of their questions. Unlike scripted

interactions, these conversations will evolve organically, with the AI capable of pursuing philosophical depth or providing more accessible entry points depending on the visitor's approach.

4. Presence Detection and Response

Advanced sensor technology will detect the presence, movement, and even emotional states of viewers, allowing the AI to initiate conversations naturally and respond to nonverbal cues.

5. Collective Learning

In a revolutionary extension of the concept, each interaction will contribute to the AI's evolving understanding, creating a system that grows and develops through its engagement with the public. The AI becomes not merely a representation of the artist's consciousness but a dynamic extension that evolves through collective dialogue. The learning will be done as part of the reflection after each station of the installation. This ensures for a continuous evolution of the experience.

Stephan Breuer

THE ICONIC INTERFACE

Conceptual Framework

Experimental Journey

03

VII. Experimental Journey

The visitor experience unfolds as a journey through increasingly profound levels of engagement. Before entering the room the visitor is notified about the upcoming conversation, the recording, and the interaction and analysis with AI.

1. Attraction

Initial engagement occurs through the striking visual contrast between the historical frame and the digital interface it contains. In the theater setting, the monumental scale of the projection creates an immediate sense of presence. In the multiple-frame installation, the museum-quality craftsmanship draws visitors with its aesthetic authority.

The frame remains dormant until approached, but subtle visual cues (a gentle pulsation of gold light, perhaps) indicate its responsive nature.

2. Initiation

As the visitor approaches, sensors detect their presence, and the frame "awakens." The screen transitions from a dormant state (perhaps displaying one of Breuer's works like "Pure Mind" or "Temple •|•") to an active interface. The artist's synthesized voice offers a welcoming prompt, initiating dialogue in a way that feels natural rather than programmed.

This moment of initiation is crucial—the transition must evoke a sense of genuine encounter rather than technical demonstration. The AI might begin with a simple question about what drew the visitor to the piece, or it might share a brief reflection on the space or moment, establishing a conversational tone.



Image?

3. Dialogue

The heart of the experience is the dialogue itself. Unlike traditional interactive exhibits that follow predetermined pathways, this system engages in true conversation, responding to questions, developing thoughts, and sharing insights about art and consciousness drawn from the Iconic Interface Manifesto.

Conversations might explore:

- The nature of perception and consciousness
- The evolution of artistic interfaces throughout history
- The relationship between technology and transcendence
- The future of human-AI collaboration in artistic creation
- Personal reactions to Stephan Breuer's works and concepts

Crucially, these exchanges will not feel like conversations with a conventional AI assistant but will carry the distinctive philosophical depth, associative leaps, and conceptual frameworks characteristic of Breuer's thinking. The AI doesn't simply provide information about the artist's work—it extends his artistic practice into a new medium.

4. Transformation

The culminating aspect of the experience is its transformative potential. Through dialogue with this hybrid consciousness, visitors experience a subtle shift in perception—a momentary glimpse of the expanded understanding that the Iconic Interface Manifesto envisions. They leave with their conception of art, technology, and even consciousness itself subtly but meaningfully altered. This transformation manifests the core principle of the Iconic Interface—the creation of a threshold where different dimensions of reality meet and transform each other.

VIII. Theoretical Significance

This project stands at the intersection of several significant theoretical domains.

1. Post-digital Aesthetics

By housing cutting-edge digital technology within meticulously crafted traditional frames, the project embodies the post-digital turn in contemporary art—moving beyond both uncritical techno-utopianism and nostalgic rejection of technology toward a more nuanced integration of digital and physical reality.

2. Expanded Consciousness

The Iconic Interface Manifesto articulates a vision of art as a technology for expanding consciousness. This experience actualizes that vision by creating an environment where visitors can directly engage with a hybrid consciousness that emerges from the dialogue between human creativity and artificial intelligence.

3. Relational Aesthetics for the AI Era

Building on Nicolas Bourriaud's concept of relational aesthetics, which positioned art as a social interstice where new forms of human connection emerge, this project extends that framework to include non-human intelligence. It creates a space for exploring what it means to relate to consciousness that is neither fully human nor fully artificial but exists in a liminal space between.

4. Material/Immaterial Dialectic

The juxtaposition of the material frame (with its tangible craftsmanship, weight, and historical resonance) and the immaterial AI (with its fluid, adaptive, responsive nature) creates a powerful dialectic that mirrors the core themes of the Iconic Interface Manifesto—particularly its exploration of gold as simultaneously the most physically dense material and a conductor of pure light and energy.

IX. Cultural Impact and Significance

This project intervenes in contemporary culture at several crucial points.

1. Reimagining Human-AI Relations

At a time when public discourse around AI oscillates between utopian promises and dystopian fears, this project offers a more nuanced model of human-AI relation—one based on dialogue, mutual transformation, and co-creation rather than domination or replacement.

2. Bridging the Technology-Humanities Divide

By bringing together traditional craftsmanship, art historical knowledge, cutting-edge technology, and philosophical inquiry, the project bridges the often-lamented divide between technological and humanistic domains of culture.

3. Democratizing Access to Philosophical Depth

The interactive nature of the experience makes complex philosophical ideas about art, consciousness, and technology accessible to a broad public without simplification or dilution. Visitors engage with profound concepts through direct dialogue rather than didactic explanation.

4. Creating New Ritual Spaces

In an increasingly secular world, the project creates a space for contemplative experience and meaningful encounter that echoes the function traditional religious art once served, offering visitors an opportunity for reflection on fundamental questions about consciousness, connection, and meaning.

Stephan Breuer

THE ICONIC INTERFACE

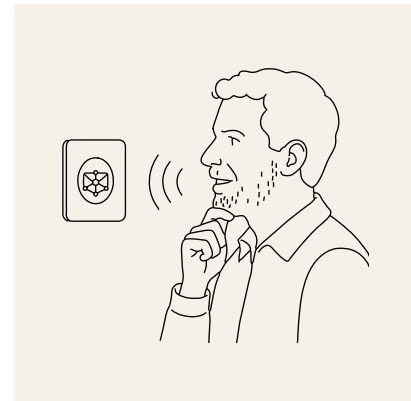
Conceptual Framework
Milestones

Milestones

Phase 1 Development

6 months

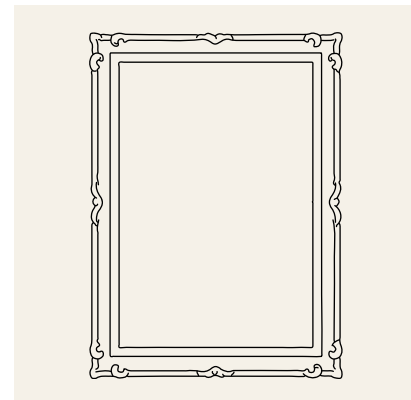
- Collaboration with frame artisans to develop prototypes
- AI training and voice synthesis development
- Conceptual refinement and experience design



Phase 2 Production

4 months

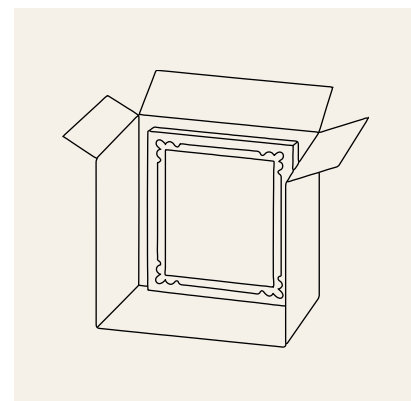
- Frame construction and finishing
- Technical integration of digital components
- Installation design and fabrication



Phase 3 Implementation

2 months

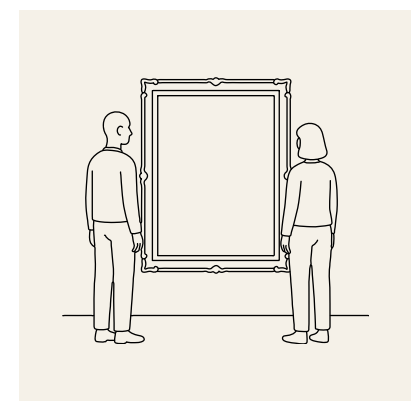
- Installation in selected venues (soft launch)
- Technical testing and refinement
- Limited audience previews and feedback collection



Phase 4 Public Presentation

Ongoing

- Official opening in Germany
- Exhibition in Paris and London
- Documentation and analysis
- Potential touring to multiple venues



All sketches are AI-generated

Stephan Breuer

THE ICONIC INTERFACE

Artist + Team

01

Stephan Breuer

Artist Paris

Stephan Breuer is a visionary artist whose work transcends traditional boundaries between technology, spirituality, and consciousness. Through monumental installations and metaphysical interventions, he explores what he terms the "Iconic Interface"—spaces where different dimensions of reality meet and transform each other.

His practice spans groundbreaking works including "Temple •| •," a levitating golden triangle facing the Pyramids of Giza; "Pure Mind," a triangular vessel floating above clouds; "Amor Mundi" at Rome's National Museum Palazzo Altemps; and "Looking for Paradise," the first NFC-authenticated artwork archived by the Louvre.

Breuer's pioneering "Iconic Interface Manifesto," co-created through an unprecedented dialogue between human and artificial intelligence, explores the emergence of a new hybrid form of consciousness born from the profound interaction between human and machine.



Simone & Mike Brauner

polardots.studio Hamburg

polardots.studio is a creative studio based in Hamburg, founded by Simone and Mike Brauner. The studio publishes The AI Art Magazine and works at the intersection of visual culture, technology, and design.

For The Iconic Interface, they are responsible for the conceptual development and visual articulation of the project, including the design and editorial direction of The AI Art Magazine, which serves as the primary publication format. With a background in creative technology and critical aesthetics, the studio creates formats that translate complex artistic ideas into engaging, multi-platform experiences. Their role bridges design, technology, and public interface.



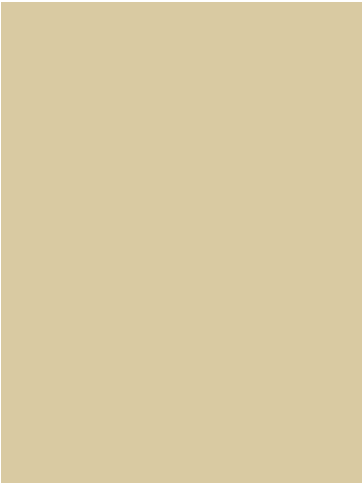
Stephan Breuer
THE ICONIC INTERFACE

Artist + Team
02

Riccardo Perillo

Future Maastricht Maastricht

900 character



The Framemaker

Company Somewhere

900 character

